

Daylight Visualizer

Calculation on zones

Project name: M.Č. 304
Simulation type: Daylight Factor
Daylight Visualizer version: 3.0.86

Select Country

Czech Republic

▼

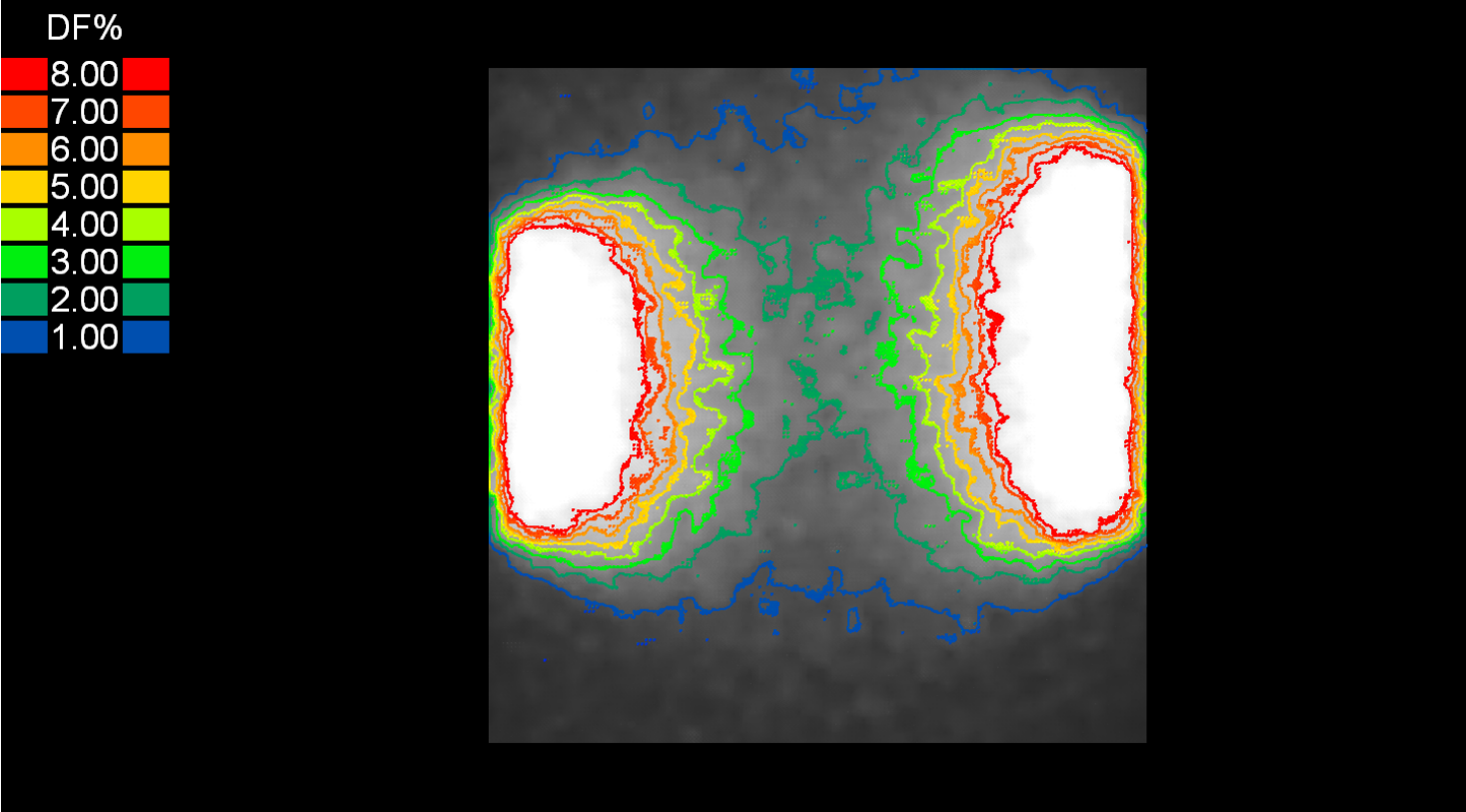
Select Report Options

- ☒ EN17037
- ☐ Active House

EN 17037 For Czech Republic the target daylight factor (D_T) is 2.0% and the minimum daylight factor target (D_{TM}) is 0.7%. The standard is available for purchase from the National Standardization Body in your country.

** The illuminance (lux) values stated in brackets are derived from the median external diffuse illuminance recorded in weather data files for the selected location.*

Zone 0



EN17037

| | | | |
|------------------------------------|----------|------------|----------------|
| $F_{plane, \%} \geq 50\%$ (median) | D_T | 2.20 DF[%] | Pass (328 lux) |
| $F_{plane, \%} \geq 95\%$ | D_{TM} | 0.41 DF[%] | Fail (61 lux) |

Default

| | | | |
|---------|---------------|------------|--|
| Average | $D_{average}$ | 3.97 DF[%] | |
|---------|---------------|------------|--|

| | | | |
|--------------|-------------------------------------|-------------|--|
| Median | D_{median} | 2.20 DF[%] | |
| Minimum | D_{min} | 0.25 DF[%] | |
| Maximum | D_{max} | 23.43 DF[%] | |
| Uniformity 1 | $D_{\text{min}}/D_{\text{average}}$ | 0.0635 | |
| Uniformity 2 | $D_{\text{min}}/D_{\text{max}}$ | 0.0107 | |

Notes

9x MK08 780x 1398 mm

